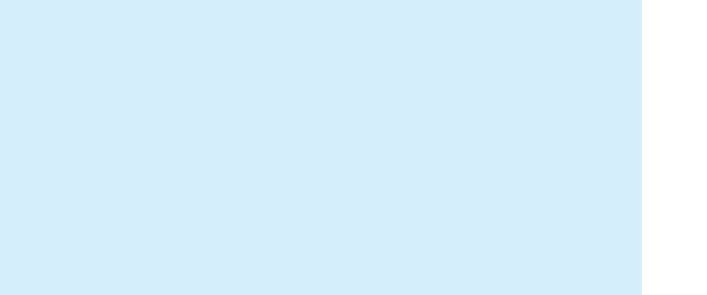
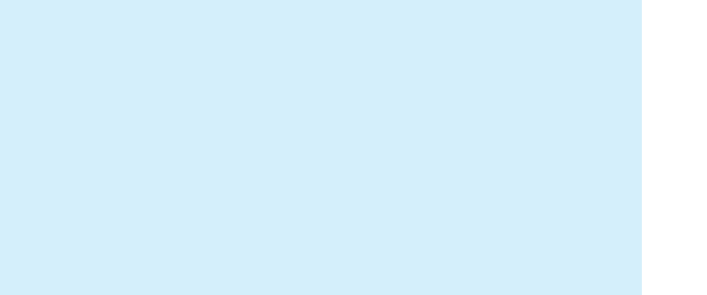
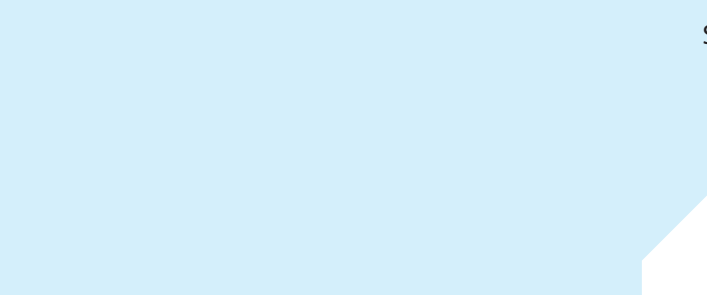
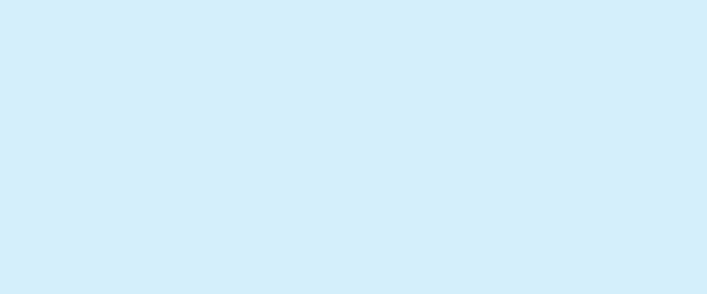
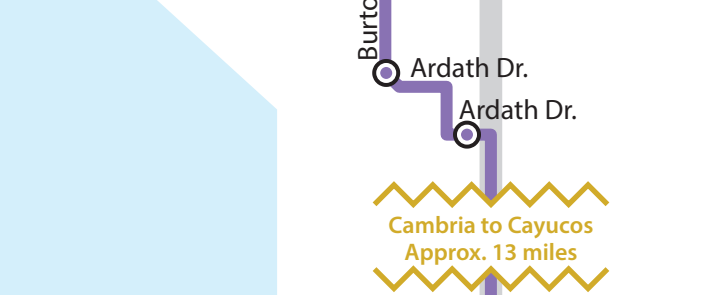
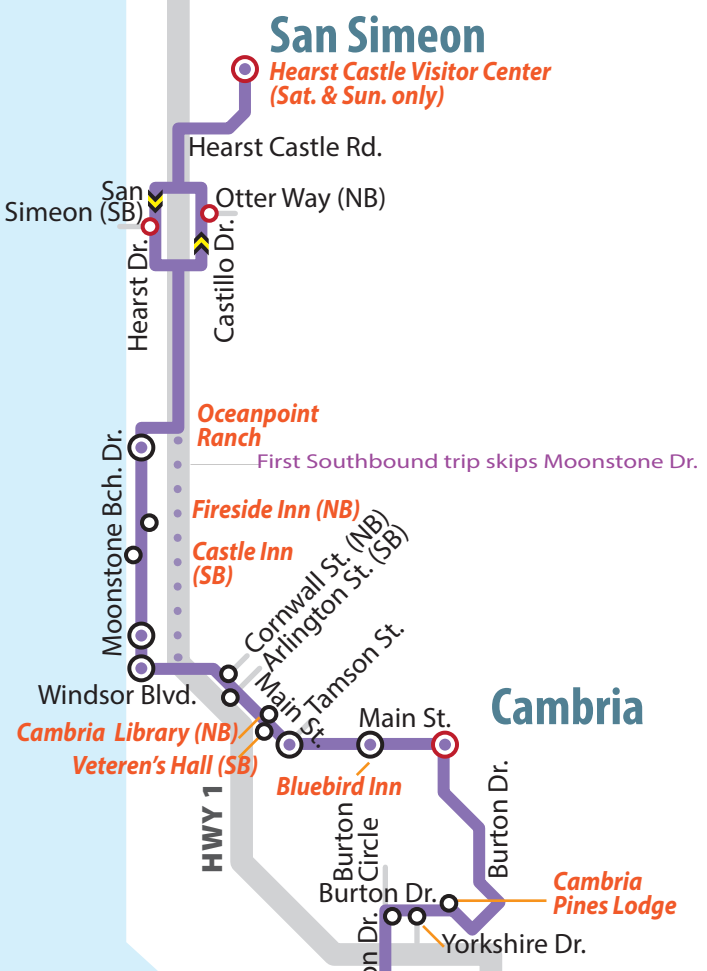


North Coast & San Luis Obispo



Legend

- Bus Stop**
single direction
Parada de autobus/
una dirección
- Bus Stop**
bus stops both directions
Northbound & Southbound
Parada de autobus/
ambas direcciones
Hacia el norte y sur
- Timed Stop**
Parada de tiempo
- "Call in Only" Stop**
Route 12
- Direction of Service**
Dirección de servicio
- Transfer Hub**
Centro de transferencias

MAP NOT TO SCALE

RTA 12 Full Route 12, Daily
Ruta 12 completa diaria

RTA 12 SOUTH
Towards San Luis Obispo: Weekday Hourly Service

RTA 12 NORTH
Towards Morro Bay & Los Osos • Weekday Hourly Service

RTA 14 Route 14: M-F During Cuesta College Fall & Spring Sessions Only
NOT IN SERVICE AT THIS TIME
Sesiones de otoño y primavera solamente

RTA 15 Route 15: Daily to Cayucos, Cambria & San Simeon • Hearst Castle Sat/Sun Only
Ruta 15, diaria

Route 15: Morro Bay High School Tripper
M-F When School is in Session
L-V cuando la escuela está en sesión

First Southbound trip of Rt. 15 does not serve Moonstone Drive

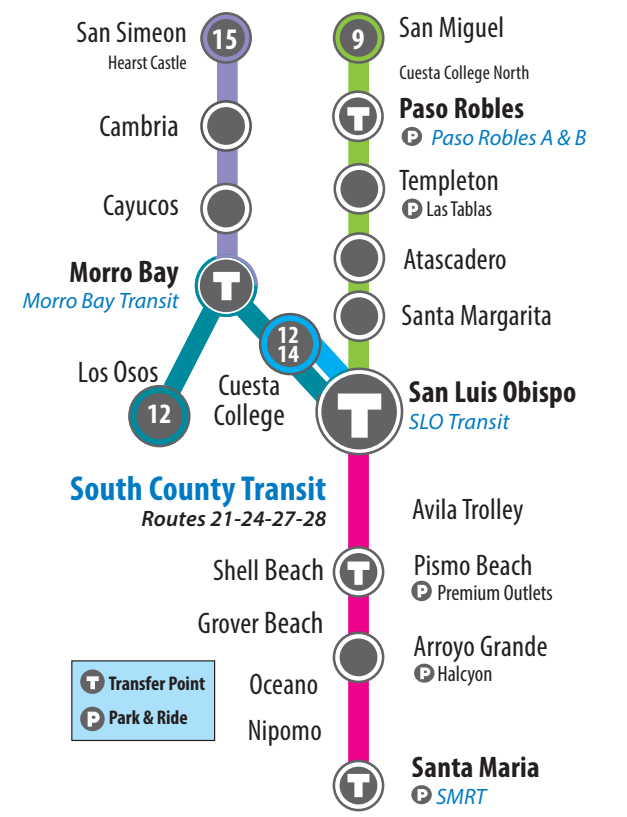
RTA 9 Route 9: Daily
Ruta 9, diaria

Route 9: Limited Service / Express Trips
Ruta 9: Servicio limitado / viajes exprés

RTA 10 Route 10: Daily
Ruta 10, diaria

Route 10: Limited Service / Express Trips
Ruta 10: Servicio limitado / viajes exprés

- 12** San Luis Obispo, Cuesta, Morro Bay & Los Osos
- 14** SLO to Cuesta College
- NOT IN SERVICE -
- 15** Morro Bay to San Simeon



www.slorta.org (805) 541-2228

GOVERNMENT CENTER OSOS & PALM
RTA Buses connect at :33 past each hour. SLO transit stop is across the street.

Los Osos loop below, is only on Northbound schedule.

TO PASO ROBLES
RTA 9

San Luis Obispo

RTA 10 TO SANTA MARIA

BOLD = PM	Route 12 Time Stops											
	ROUTE	Northbound			Los Osos Loop			Southbound				
		San Luis Obispo		Morro Bay	Marked Times Connect To RTA 15			Morro Bay	San Luis Obispo			
		Gov't Center	Cal Poly Library	Cuesta College	Morro Bay Park	Santa Ysabel at 15th	Pine at LOVR	Santa Ysabel at 15th	Morro Bay Park	Cuesta College	Cal Poly Library	Gov't Center
Monday - Friday <i>Lunes a Viernes</i>	-	-	-	-	6:10 AM	6:19	6:30	6:42	6:51	7:03	7:12 AM	
	6:33	-	6:46	6:59	7:07	7:16	7:27	7:39	7:50	-	8:06	
	7:33	-	7:46	7:59	8:07	8:16	8:27	8:39	8:50	-	9:06	
	8:33	-	8:46	8:59	9:07	9:16	9:27	9:39	9:50	-	10:06	
	9:33	-	9:46	9:59	10:07	10:16	10:27	10:39	10:50	-	11:06	
	10:33	-	10:46	10:59	11:07	11:16	11:27	11:39	11:50	-	12:06	
	11:33	-	11:46	11:59	12:07	12:16	12:27	12:39	12:50	-	1:06	
	12:33	-	12:46	12:59	1:07	1:16	1:27	1:39	1:50	-	2:06	
	1:33	-	1:46	1:59	2:07	2:16	2:27	2:39	2:50	-	3:06	
	2:33	-	2:46	2:59	3:07	3:16	3:27	3:39	3:50	-	4:06	
	3:33	-	3:46	3:59	4:07	4:16	4:27	4:39	4:50	-	5:06	
	4:33	-	4:46	4:59	5:07	5:16	5:27	5:39	5:50	-	6:06	
	5:33	-	5:46	5:59	6:07	6:16	6:27	6:39	6:50	-	7:06	
	6:33	-	6:46	6:59	7:07	7:16	7:27	7:39	7:50	-	8:06	
7:33	-	7:46	7:59	8:07	8:16	8:27	8:39	8:50	-	9:06		
8:33	-	8:46	8:59	9:07	9:16	9:27	9:39	9:50	-	10:06		
Saturday <i>Sabado</i>	-	-	-	-	7:30	7:39	7:50	8:00	CALL	-	8:25	
	8:33	-	CALL	9:00	9:08	9:17	9:28	-	-	-	-	
	-	-	-	-	10:30	10:39	10:50	11:00	CALL	-	11:25	
	11:33	-	CALL	12:00	12:08	12:17	12:28	-	-	-	-	
	-	-	-	-	12:30	12:39	12:50	1:00	CALL	-	1:25	
	1:33	-	CALL	2:00	2:08	2:17	2:28	-	-	-	-	
	-	-	-	-	3:30	3:39	3:50	4:00	CALL	-	4:25	
	4:33	-	CALL	5:00	5:08	5:17	5:28	-	-	-	-	
-	-	-	-	6:30	6:39	6:50	7:00	CALL	-	7:25		
7:33	-	CALL	8:00	8:08	8:17	8:28	-	-	-	-		
Sunday <i>Domingo</i>	-	-	-	-	8:30	8:39	8:50	9:00	CALL	-	9:25	
	9:33	-	CALL	10:00	10:08	10:17	10:28	10:38	CALL	-	11:00	
	11:50	-	CALL	12:17	12:25	12:34	12:45	1:00	CALL	-	1:25	
	1:33	-	CALL	2:00	2:08	2:17	2:28	2:38	CALL	-	3:00	
	3:50	-	CALL	4:17	4:25	4:34	4:45	5:00	CALL	-	5:25	
	5:33	-	CALL	6:00	6:08	6:17	6:28	-	-	-	-	

Route 14					
Weekdays during Cuesta Fall & Spring Sessions Only*					
To Cuesta			From Cuesta		
Gov't Center	The SLO Appts	Cuesta College	Cuesta College	Santa Rosa & Foothill	Gov't Center
7:30*	7:33	7:41	-	-	-
8:03	8:06	8:14	-	-	-
-	8:33	8:41	8:44	8:51	8:59
9:03	9:06	9:14	-	-	-
-	9:33	9:41	-	9:55	9:59
10:03	10:06	10:14	-	-	-
-	10:33	10:41	10:44	10:52	11:00
-	-	-	11:40	11:51	11:55
11:55	11:58	12:07	12:10	12:21	12:25
12:25	12:28	12:37	12:40	12:51	12:55
12:55	12:58	1:07	1:10	1:21	1:25
1:25	1:28	1:37	1:40	1:51	1:55
1:55	1:58	2:07	2:10	2:21	2:25
2:25	2:29	-	3:10*	3:21	3:25
-	-	-	4:10*	4:21	4:25

Route 15 Morro Bay High School / Cayucos Tripper				
Cayucos Pier	3rd @ Ocean	9th @ Ocean	Ocean @ Old Creek	MBHS
MONDAY-Late Start				
8:45a	8:45a	8:45a	8:50a	9:00a
TUESDAY-FRIDAY				
8:00a	8:00a	8:00a	8:05a	8:15a
AFTERNOON- MONDAY-FRIDAY				
MBHS	Ocean @ Old Creek	8th @ Ocean	3rd @ Ocean	Cayucos @ Ocean
3:40p	3:50p	3:51p	3:52p	3:55p

Full Route 12 Stop List

NORTHBOUND

SLO Government Center
-Connects with RTA 9 & 10
Santa Rosa at Murray
Santa Rosa at The SLO Housing-NB
Cal Poly Kennedy Library *Limited Service*
CA Men's Colony *Call in only*
Kansas at Hwy. 1
Cuesta College *Call in on weekends*
Morro Bay Park *Connects to RTA 15*

LOS OSOS LOOP

Southbay at Quintana
Santa Ysabel at 15th
11th at El Moro: Baywood
11th at Ramona
10th at Santa Ynez
10th at LOVR
LOVR at Palisades
Pine at LOVR

LOS OSOS LOOP CONTINUED

Pine at Loma
Ramona at 7th
7th at El Morro
2nd at Santa Maria
Santa Ysabel at 7th
Santa Ysabel at 15th
South Bay at Quintana
Morro Bay Park

SOUTHBOUND

Morro Bay Park-Depart
Cuesta College *Call in on weekends*
Kansas at Hwy 1
CA Men's Colony *Call in only*
Cal Poly Library-*Limited Service*
Santa Rosa at Foothill -SB
Santa Rosa at Murray
SLO Government Center

See map to view all Route 15 bus stops

BOLD = PM	ROUTE 15 NORTHBOUND TIMED STOPS: MORRO BAY TOWARDS SAN SIMEON					12 & 15 Connect at Morro Bay Park	ROUTE 15 SOUTHBOUND TIMED STOPS: SAN SIMEON TOWARDS MORRO BAY				
	MORRO BAY	CAYUCOS	CAMBRIA	SAN SIMEON			SAN SIMEON		CAMBRIA	CAYUCOS	MORRO BAY
	Morro Bay Park - Depart	Cayucos Dr. @ Ocean	Burton @ Main St.	Castillo @ Otter Way	Hearst Castle Visitor Center		Hearst Castle Visitors Center	Hearst Dr. @ San Simeon	Burton @ Main St.	Ocean @ Cayucos Pier	Morro Bay Park
Mon- Fri <i>Lunes a Viernes</i>	7:00	7:12	7:34	7:44	----	----	6:00*	6:12	6:30	6:43	
	10:00	10:12	10:34	10:44	----	----	7:50	8:00	8:20	8:33	
	12:00	12:12	12:34	12:44	----	----	10:50	11:00	11:20	11:33	
	3:00	3:12	3:34	3:44	----	----	1:50	2:00	2:20	2:33	
	6:00	6:12	6:34	6:44	----	----	4:50	5:00	5:20	5:33	
Saturday <i>Sabado</i>	9:00	9:12	9:34	9:47	9:54	----	7:05	7:17	7:40	7:55	
	12:00	12:12	12:34	12:47	12:54	10:00	10:05	10:17	10:40	10:55	
	2:00	2:12	2:34	2:47	2:54	12:00	12:05	12:17	12:40	12:55	
	5:00	5:12	5:34	5:47	5:54	3:00	3:05	3:17	3:40	3:55	
Sunday <i>Domingo</i>	8:00	8:12	8:34	8:47	----	6:00**	6:05	6:17	6:40	6:55	
	10:00	10:12	10:34	10:47	10:54	----	8:05	8:17	8:40	8:55	
	2:00	2:12	2:34	2:47	2:54	12:00	12:05	12:17	12:40	12:55	
	6:00	6:12	6:34	6:47	----	4:00	4:05	4:17	4:40	4:55	

* The first Southbound trip does not serve Moonstone Drive

** 6PM Saturday from Hearst Castle is a call-in for pick up only. Please call by 5:30 PM for a pick up

The bus stop for MBHS is on Atascadero Road at the bus circle entrance. **The tripper operates M-F during regularly scheduled school days only.**

CASH FARES TARIFAS	San Luis Obispo	Cuesta Kansas St. CMC	Morro Bay Los Osos Cayucos	Cambria San Simeon
San Luis Obispo	\$1.75	\$2.25	\$2.75	\$3.25
Cuesta College Kansas / CMC	\$2.25	\$1.75	\$2.25	\$2.75
Morro Bay Los Osos, Cayucos	\$2.75	\$2.25	\$1.75	\$2.25
Cambria San Simeon	\$3.25	\$2.75	\$2.25	\$1.75

Regional Day Pass: \$5.50

SAVE MONEY, BUY A PASS Ahorre dinero, compra un pase	
Regional Day Pass	\$5.50
RTA 31-Day Pass	\$47 Regular/\$23.50 Discount
Regional 31-Day Pass	\$68 Regular/\$34 Discount
Stored Value Card	\$15 Value
7-Day Pass	\$16.00
See the Ride Guide for detailed pass & fare information. <i>Vea el guia de pasajero para detalles sobre pases y informacion sobre tarifas.</i>	
Discount Fares: half the regular cash fares for Seniors (65-79), Disabled and Medicare Card Holders, Students (K-12, RTA Only) <i>Precios descuentos: Mayores (65-79), Estudiantes (K-12), Discapacitados y personas con tarjeta de Medicare.</i>	
Children 44" and under ride free with paying adult <i>Niños debajo de 44 pulgadas viajan gratis al ser acompañados por un pasajero pagando la tarifa regular.</i>	
Please carry exact fare. No change is given. <i>Favor de traer la tarifa exacta.</i>	

SLORTA.ORG (805)541-2228